



Solana Santa Fe School Modernization Scope, Timeline, and Budget

Solana Beach School District
Board Meeting
February 13, 2020



Purpose

To provide the Board with updated information regarding the scope, timeline, and budget for the modernization of Solana Santa Fe School.

Outcomes

To seek input and/or additional parameters from the Board:

- Prior to requesting board approval for a full scope architectural service agreement for Solana Santa Fe (March 12, 2020)
- Prior to recommending project scope, timeline, and budget (April 16, 2020)
- Prior to award of Lease Lease-Back contract (May 21, 2020)

Project Timeline

Timeline

May 2019

Awarded architectural services professional services agreement for pre-design and site master planning to Lionakis

November 2019

Staff and Architect presented a site layout, budget (\$16.2m), and funding sources (Measure JJ and CFDs)

January/February
2020

SSF Modernization meetings to gather feedback on site layout from site staff, garden coordinators, and Community at-large

February 2020

Staff and Architect report to Board further development of preferred layout

March 2020

Seek approval for refined site layout, scope of project, timeline, budget, and architectural professional services agreement going forward

April 2020

Board update on the Modernization project, seek approval to proceed proceed with scope, timeline, and budget



Scope of the Project

Site Plan

Current
 Parking stalls - 45
 Queuing - 22 cars

Proposed
 Parking stalls - 74
 Queuing - 39 cars



CONCEPTUAL SITE PLAN

SOLANA SANTA FE 02/03/2020



LIONAKIS

New Building Plan and Elevations



SECOND FLOOR



FIRST FLOOR

CLASSROOM BUILDING LEGEND

- BREAK OUT SPACE
- CLASSROOM
- SERVICE



NORTH



SOUTH

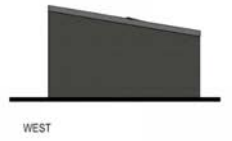
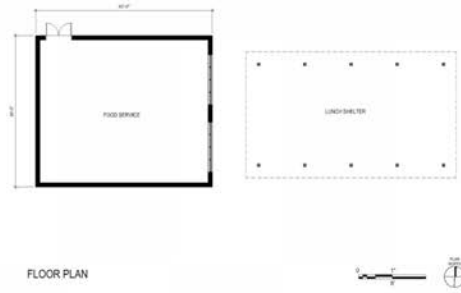


WEST

CLASSROOM BUILDING - CONCEPTUAL PLANS

SOLANA SANTA FE 02/03/2020

Student Kitchen Elevation



FOOD SERVICE BUILDING - CONCEPTUAL PLAN AND ELEVATIONS

SOLANA SANTA FE 02/03/2020

LIONAKIS

SCHEMATIC DESIGN

LANDSCAPE DESIGN CONCEPT

JANUARY 16, 2020



SCHEMATIC DESIGN

LANDSCAPE DESIGN CONCEPT

JANUARY 16, 2020



SCHEMATIC DESIGN

LANDSCAPE DESIGN CONCEPT

JANUARY 16, 2020



LANDSCAPE SITE PLAN

JANUARY 16, 2020



Legend:

- 1 Existing monument sign
- 2 Concrete accent paving at entry
- 3 New Jacaranda trees
- 4 Shade tree
- 5 Salvaged table / umbrellas located on new artificial turf
- 6 42" high barrier fence
- 7 Existing slope planting
- 8 Stormwater treatment area
- 9 Animal visiting area
- 10 Relocated benches
- 11 New bench
- 12 Existing hard courts
- 13 Existing garden
- 14 Outdoor lunch shelter
- 15 Food service building
- 16 Trike track
- 17 Fabric shade canopy over new play structure
- 18 Existing channel
- 19 Drop-off / pickup
- 20 Circular bench at existing tree

Garden Concept



Legend:

- 1 New 4'x8' raised planter boxes
- 2 New hedge to create edge of garden
- 3 New 6' bench
- 4 ADA accessible concrete path to new planters
- 5 New curvilinear bench at new tree
- 6 Expanded concrete pad
- 7 (6) re-purposed benches at shaded outdoor instruction area
- 8 Extended shade covering from existing trellis
- 9 Relocated bench
- 10 New potting table
- 11 New sink and counter at shed
- 12 Re-aligned fence
- 13 New citrus trees



GROUNDLEVEL
LANDSCAPE ARCHITECTURE

PROJECT
SOLANA SANTA FE ES
Rancho Santa Fe, California

CATEGORY
Schematic Design
February 13, 2020

SUBJECT
Garden Area

Project Summary

Scope - as presented (Slides 6-9)

Timeline - as presented (Slide 4)

Budget - \$16,200,000*

**Subject to additional board direction*

Board Discussion